



# Passkeys migration in the enterprise

Martin Sandren

Inter Ikea IAM product leader

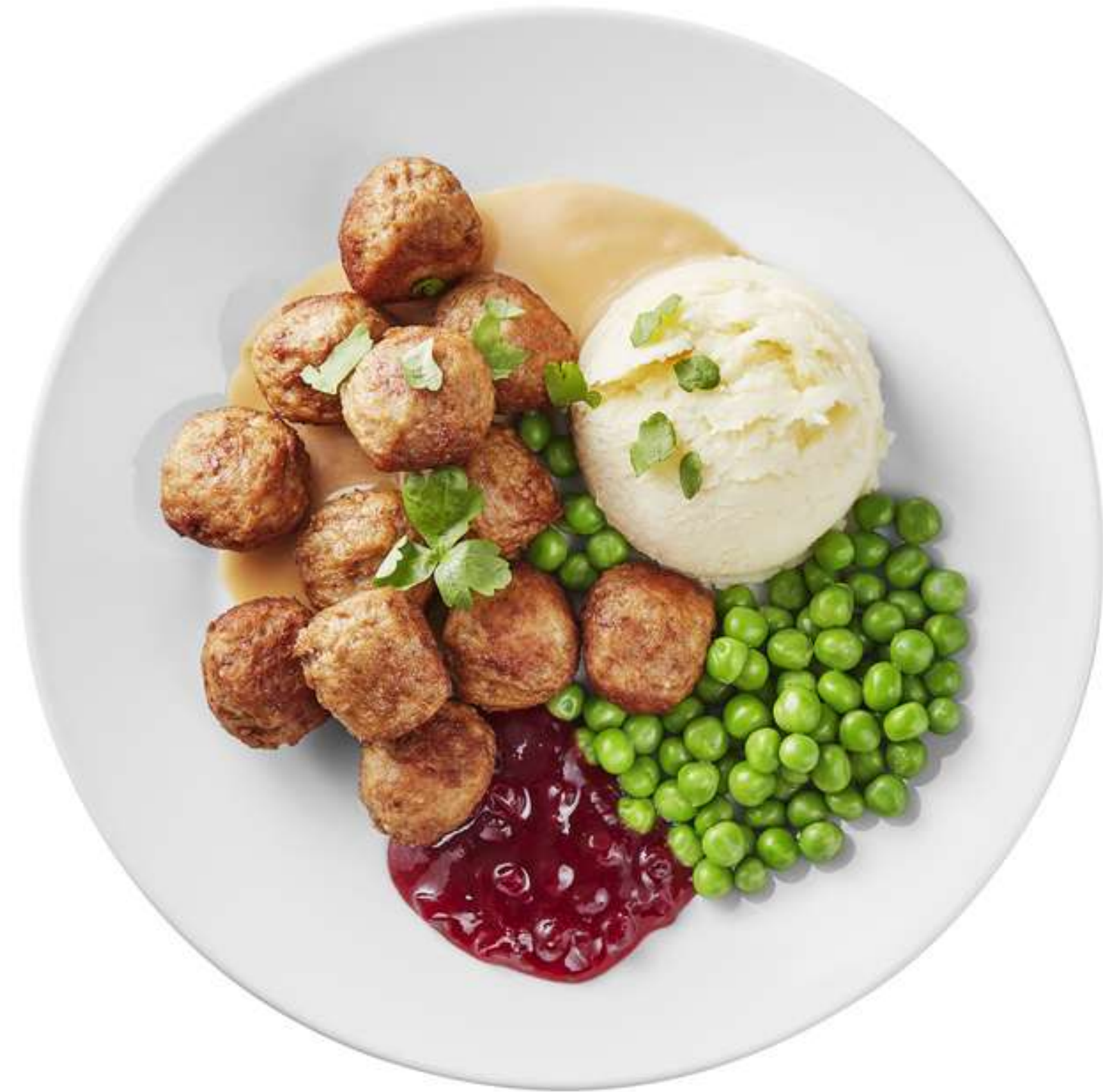
# Why passkeys in the enterprise?



Protect what matters the most

Make life easier for the many

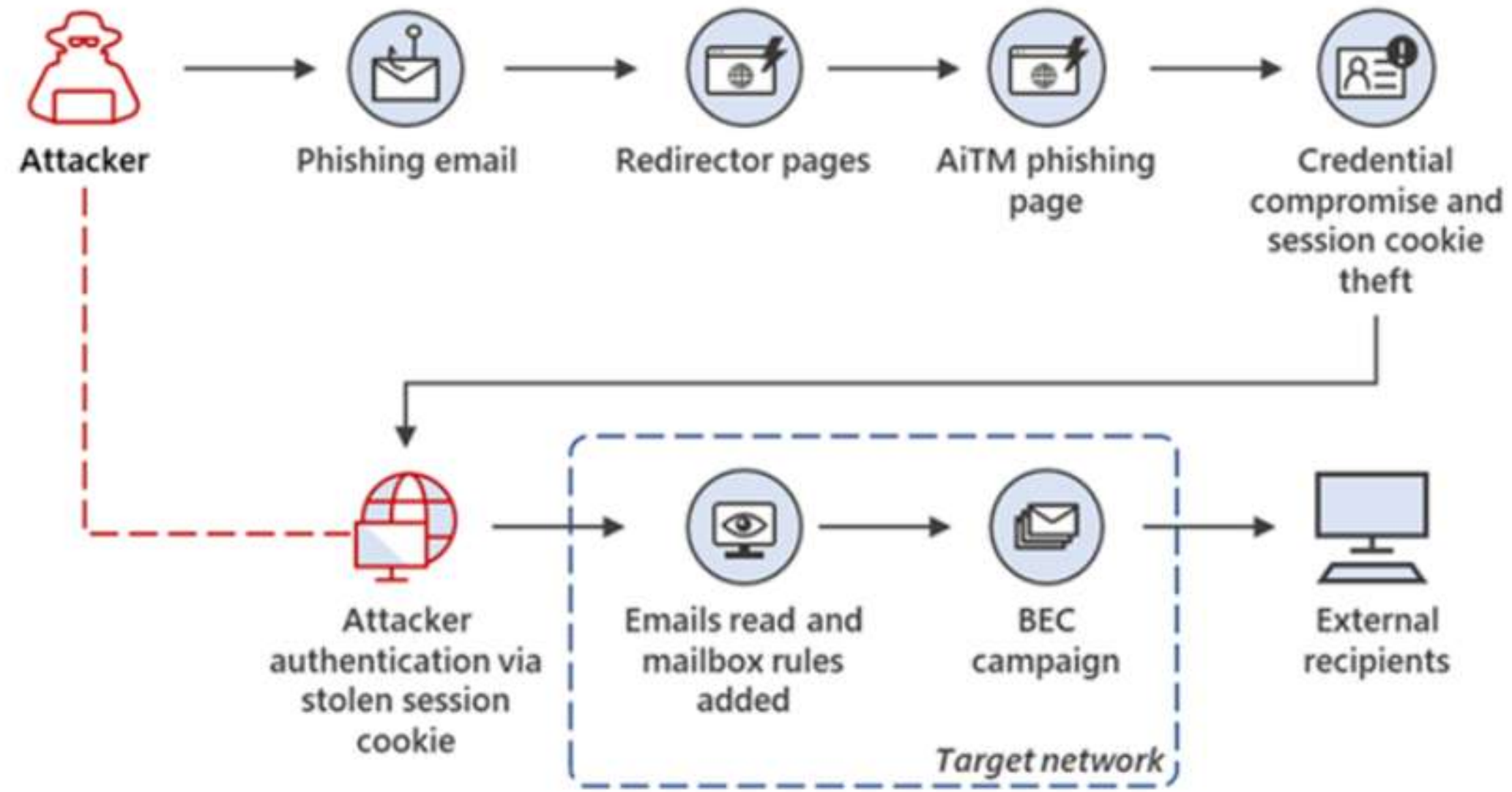
# Why is identity security important?



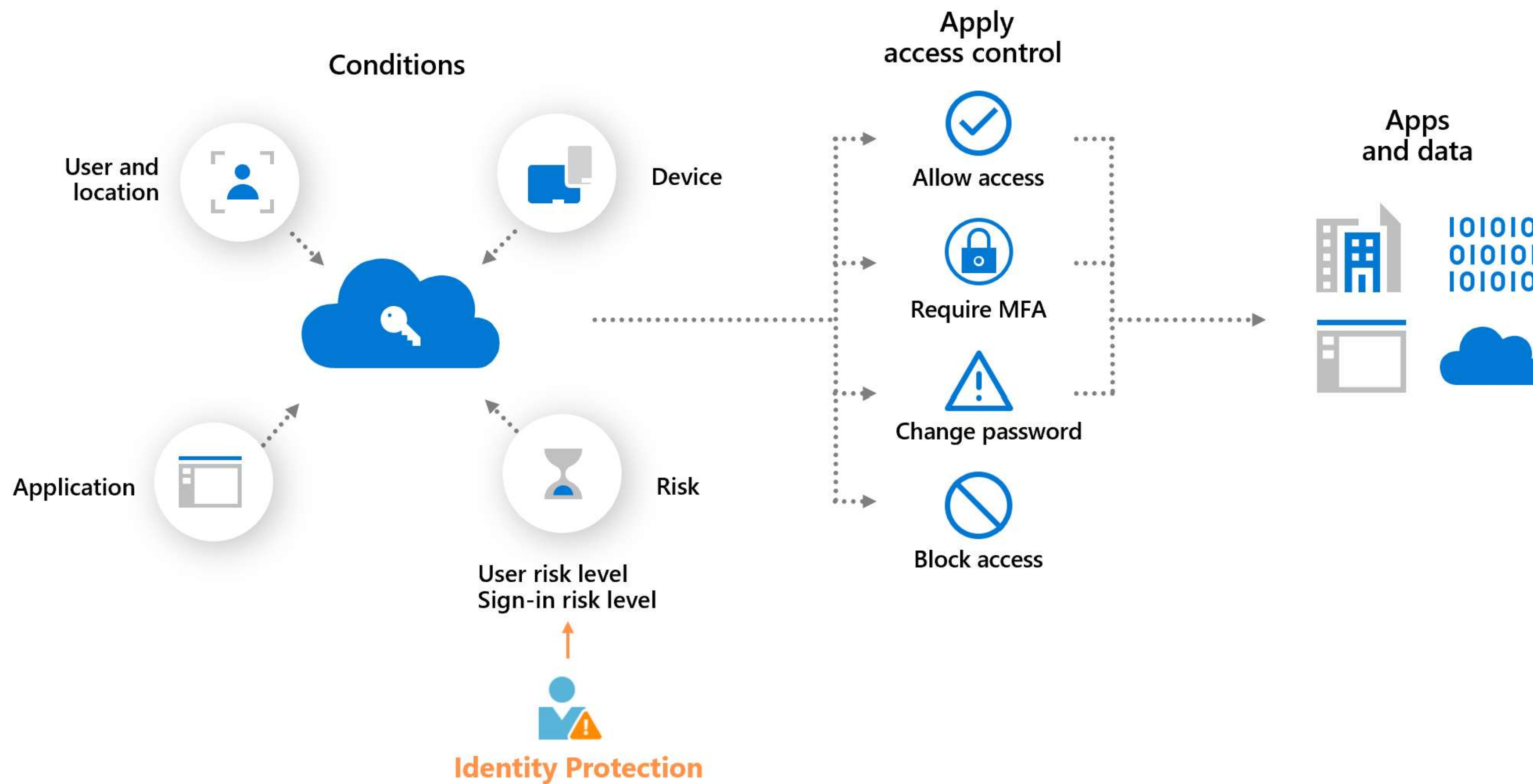
Today, hackers  
do not break in  
They log in

# Adversary in the Middle Token Attack

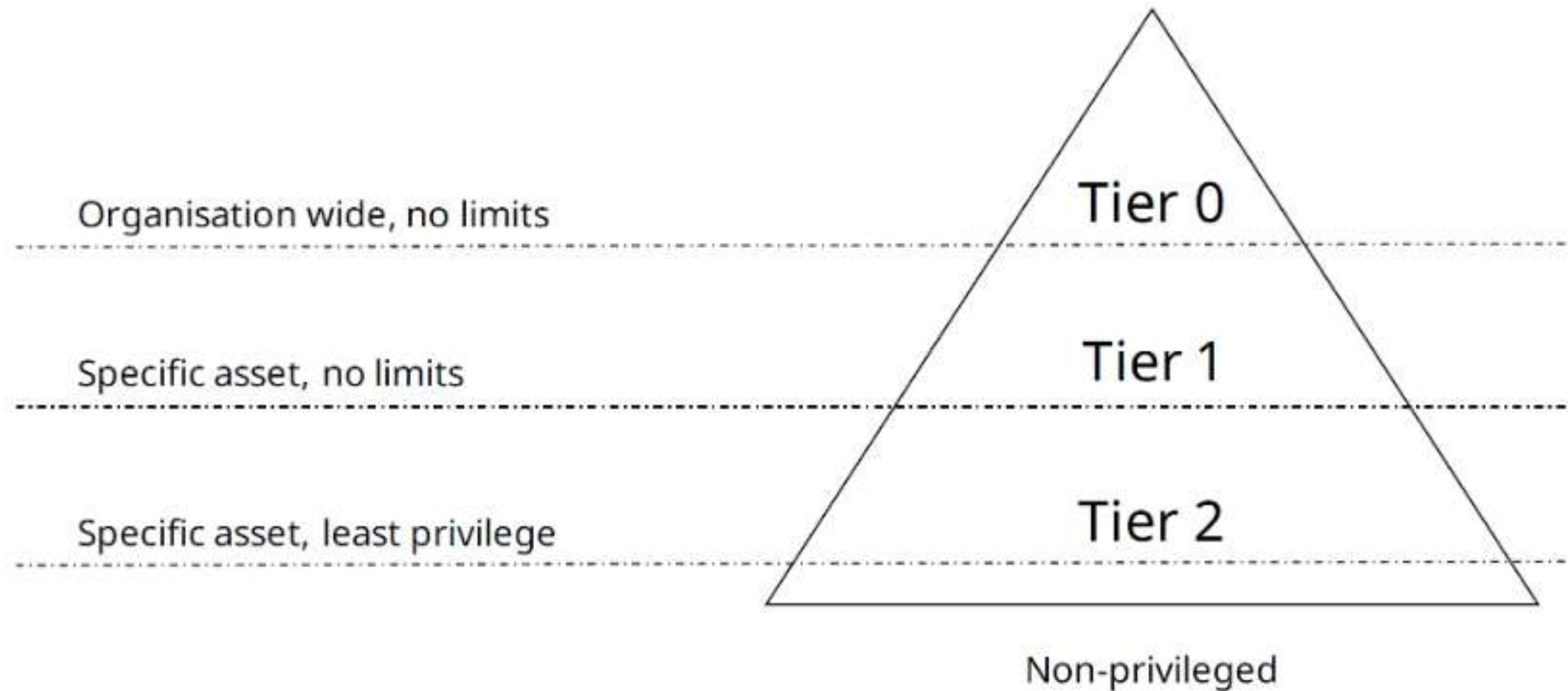
Source: Microsoft



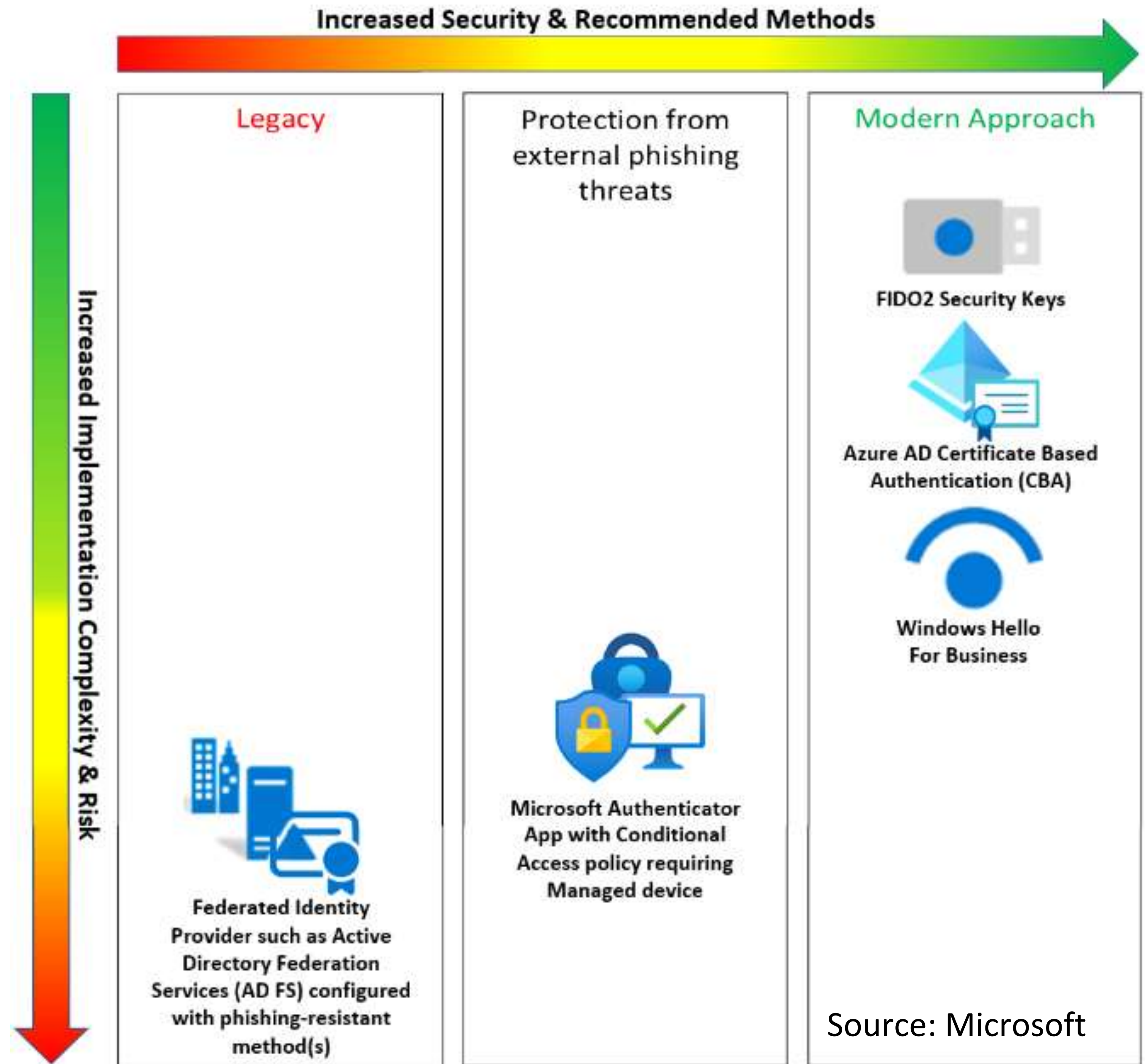
# Defense in depth and ITDR helps some



# Prioritize phishing resistant auth for Tier 0 and Tier 1



# Road to resilience



# Device bound vs synchable passkeys



Device bound = secure



Synchable = practical

# How about the easier life for the many?



Today: Login/PWD with egress IP  
Tomorrow: NFC / QR code based  
login

FIDO2 would be an alternative if TCO  
can be made competitive

# MS Passkey observed problems



Android onboarding issues

Remote desktop setups



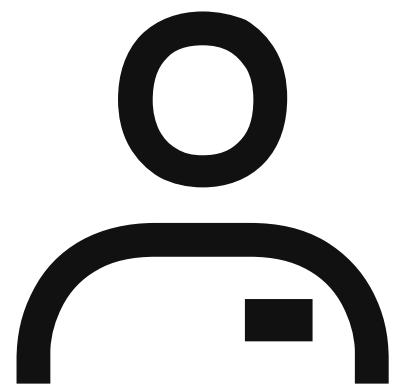
you just can't get to the store

Want to see you... IKEA.se

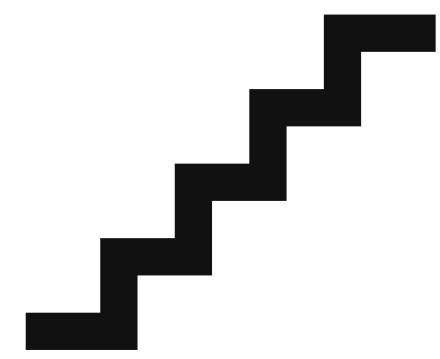


**The service desk is the users (and the hackers) best friend**

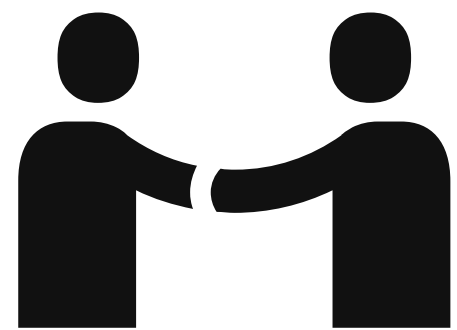
# Passkeys in the enterprise call to action



Passkeys can play an important part of your identity security strategy by providing improved phish resistance



Prioritize Tier 0 and Tier 1 admins as this provides best ROI and least Organisational resistance



Start working with the business to resolve organisational and financial blockers such as funding for new phones.



A photograph of a wooden deck with a green and white patterned rug. A wooden chair is visible in the bottom left corner. The background is a light-colored wooden wall.

Thank you

**Martin Sandren**

IAM product leader Inter Ikea

[martin.sandren@inter.ikea.com](mailto:martin.sandren@inter.ikea.com)

<https://www.linkedin.com/in/martinsandren>